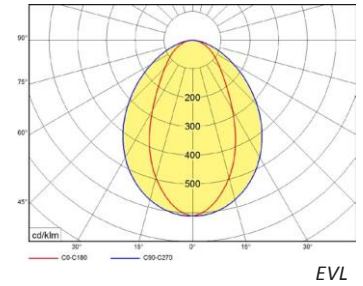
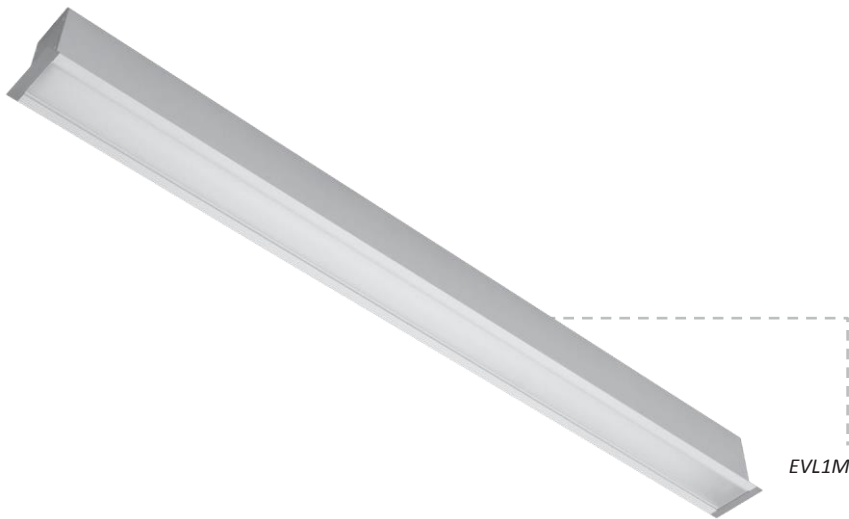
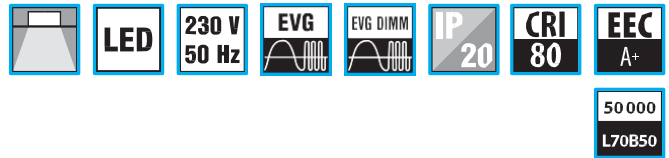


EVL



Lineare LED Einbauleuchten

Gehäuse:

Eloxiertes Aluminiumgehäuse, Endkappen RAL9006

Optik:

Opale Abdeckung

Verschaltung:

LED Konstantstromtreiber
ND - nicht dimmbar (standard)
DIM - dimmbar 1-10V DC
DALI - dimmbar DALI

Variante:

EVL - Einbauleuchte für die Installation in falschen Decken

Recessed LED linear fittings

Body:

Anodized aluminum profile, end caps RAL9006

Optic:

opal cover

Wiring:

LED current driver
ND - not dimmable (standard)
DIM - dimmable 1-10V DC
DALI - dimmable DALI

Variante:

EVL - recessed fitting for single installation into false ceiling

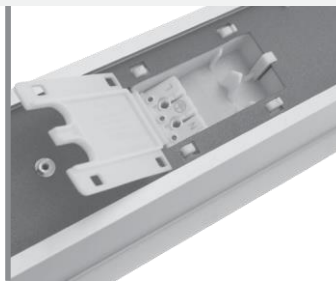
ENDKAPPE DER LEUCHE / END CUP
OF LUMINAIRE



RÜCKSEITE / BACK SIDE

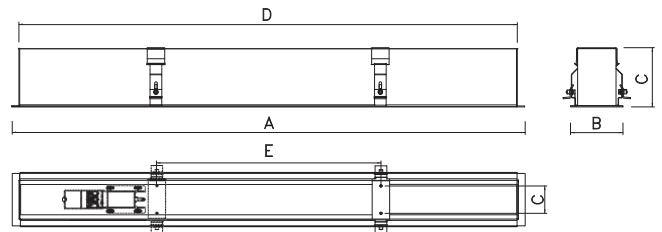
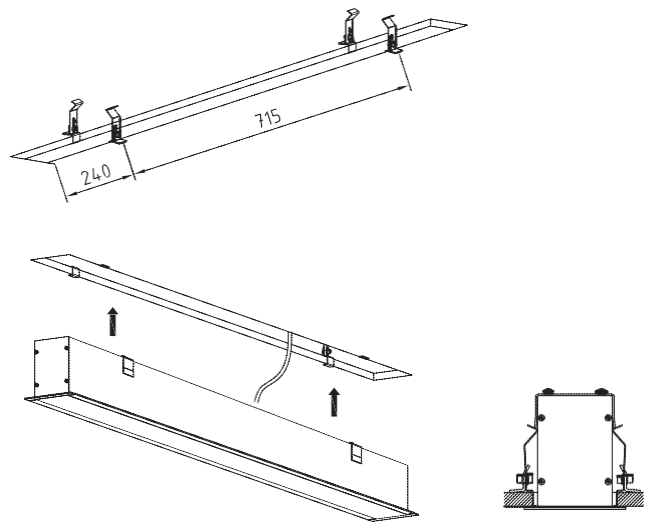
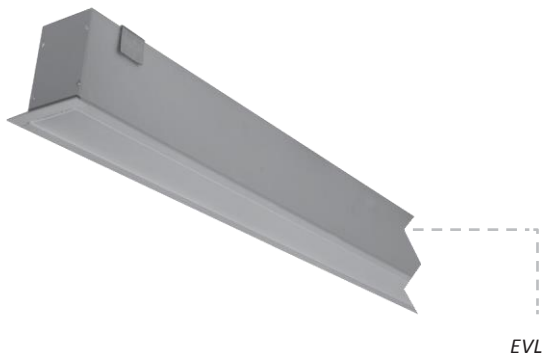



ISO3 KLEMMBLOCK / ISO3
CONNECTOR



Codes: EVL1MKO3V1/1050ND

EVL	1	M	KO	3	V1	/1050ND
Leuchtentyp / luminaire type						
Anzahl Leuchtstreifen / no. of light strips						
Gehäuselänge / body length:						
M = 1200mm						
L = 1500mm						
Abdeckung / coverytype:						
KO = Opal / opal						
Farbtemperatur / color temperature:						
3= 3000K						
4= 4000K						
Verbaute LEDs / used LEDs						
Treibertyp / driver type:						
ND - nicht dimmbar / not dimmable						
DIM - dimmbar 1-10V / dimmable 1-10V						
DALI - dimmbar DALI / dimmable DALI						



	&	W	lm	lm/W	A	B	C	
EVL1MKO&/ 700	3 = 3000K	36	3200	89	1210	90	100	1195x75
EVL1MKO&/ 1050	4 = 4000K	56	4700	84				