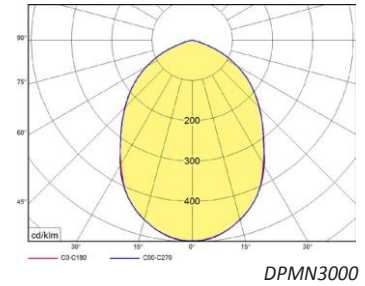
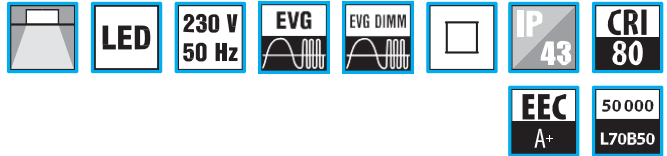


DPMN



LED Downlight für den Deckeneinbau

Gehäuse:

Weiß lackiertes Aluminiumgehäuse

Optik:

Hochglanzpolierter Aluminiumreflektor
Opale Glasabdeckung

LED:

COB CITIZEN

Verschaltung:

LED Konstantstromtreiber - separat
ND - nicht dimmbar (Standard)
DIM - dimmbar 1-10V
DALI - dimmbar DALI

Anwendung:

Einbaudownlight für die Installation in falschen Decken

Versionen:

B - Durchmesser Reflektor 140 mm
C - Durchmesser Reflektor 190 mm
D - Durchmesser Reflektor 240 mm

Recessed LED downlights

Body:

White painted aluminum body

Optic:

High polished aluminum reflector
Opal glass cover

LED:

COB CITIZEN

Wiring:

LED driver (constant current) - located separately.
ND - not dimmable (standard)
DIM - dimmable 1-10V
DALI - dimmable DALI

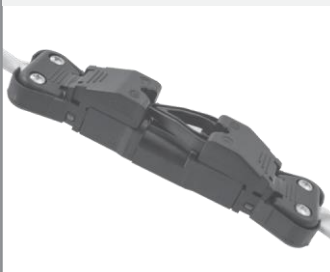
Application:

Recessed downlight for installation into false ceiling

Versions:

B - reflector diameter 140 mm
C - reflector diameter 190 mm
D - reflector diameter 240 mm

VERBINDER / CONNECTOR



HALTEKLAMMER / FIXING CLIP



LEUCHE MIT TREIBER / LUMINAIRE WITH DRIVER



DETAILANSICHT REFLEKTOR / DETAIL OF REFLECTOR

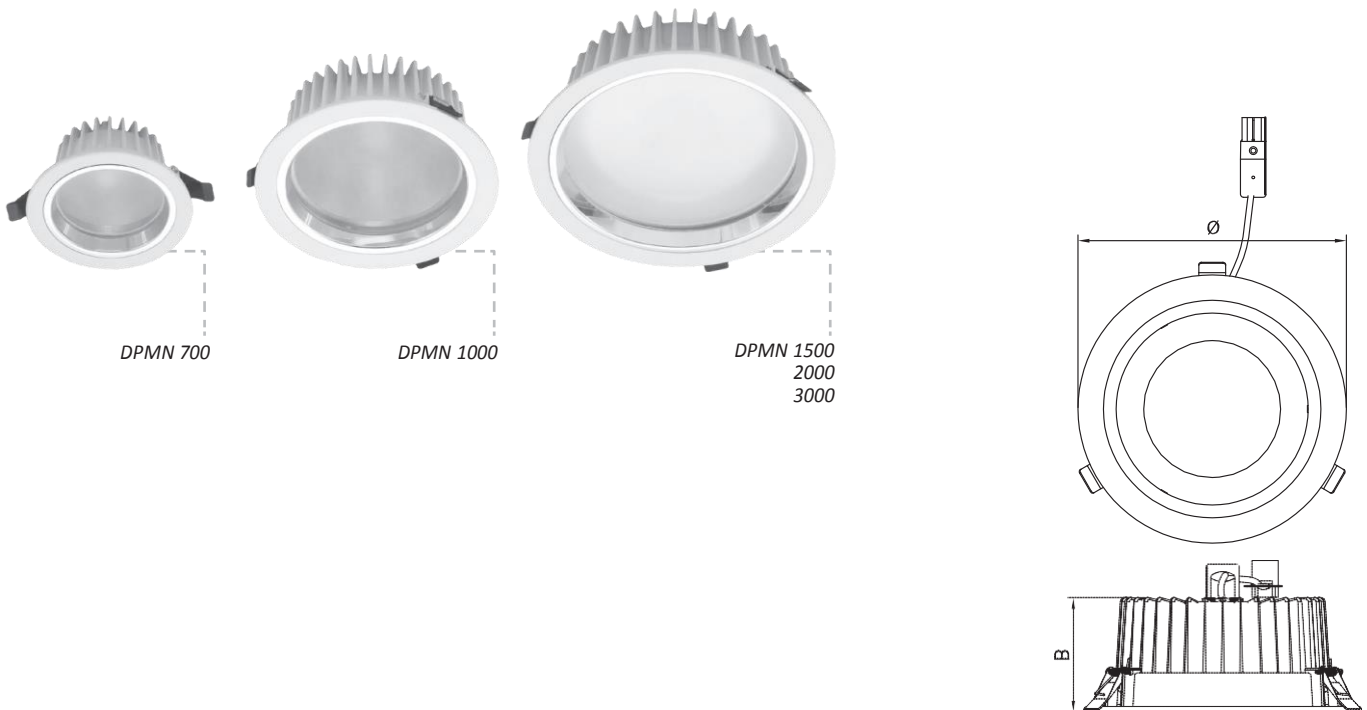



Codes: DPMN1000KO3V1CB/ND

DPMN	1000	KO	3	V1	C	B	/ND
Leuchtentyp / luminaire type							
Lumen / light output (lm)							
Abdeckung / covertype: O - Opalglass / opal glass							
Farbtemperatur / color temperature: 3 = 3000K 4 = 4000K							
LED							
Gehäusedurchmesser / body diameter: B - Außendurchmesser / body size 130mm - ring outside diameter C - Außendurchmesser / body size 190mm - ring outside diameter D - Außendurchmesser / body size 240 mm - ring outside diameter							
Gehäusefarbe / body color: B - weiß / white							
Treibertyp / driver type: ND - nicht dimmbar / not dimmable DIM - dimmbar 1-10V / dimmable 1-10V DALI - dimmbar DALI / dimmable DALI							

DPMN	DPMN700	DPMN1000	DPMN1500	DPMN2000	DPMN3000
Leistung / power	11W	15W	21W	28W	40W
Lumen / luminaire light output	700lm	900lm	1500lm	2000lm	3000lm
Effizienz / efficiency	64 lm/W	60 lm/W	72 lm/W	72 lm/W	75 lm/W
Äquivalente konventionelle Leuchten* / equivalent conventional lamps*	40W	60W	80W	100W	150W

* ungefährender Vergleich / approximate comparison



	W	lm	lm/W	ø	B	
DPMN700KO&V2	11	700	64	130	90	115
DPMN1000KO&V2	15	900	60	190		178
DPMN1500KO&V2	21	1500	71	240	85	225
DPMN2000KO&V2	28	2000	71			
DPMN3000KO&V2	40	3000	75			

&-3=3000K,4=4000K

lm - Lumen / luminaire light output