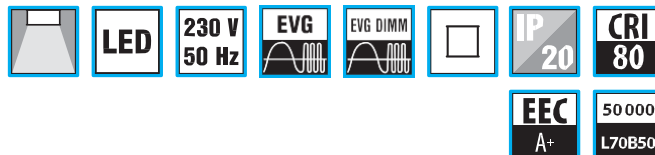
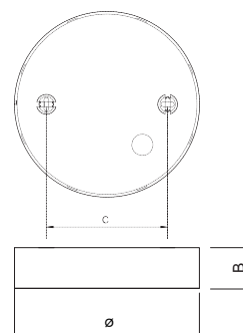


DPMA



DPMA190



LED Deckenleuchten

Gehäuse:

Pulverbeschichtetes Stahlblech in Weiß (RAL 9003)

Optik:

Transparente Acrylabdeckung mit prismatischer Schicht

LED:

Mid Power LED

3... warmweiß 3000K

4... neutralweiß 4000K

Verschaltung:

LED Konstantstromtreiber

ND - nicht dimmbar (Standard)

DIM - dimmbar 1-10V DC

DALI - dimmbar DALI

Surfaced LED fittings

Body:

White painted (RAL 9003) metal sheet

Optic:

Translucent acrylic cover with a prismatic layer

LED:

Mid Power LED

3... warm white 3000K

4... neutral white 4000K

Wiring:

LED current driver

ND - not dimmable (standard)

DIM - dimmable 1-10V DC

DALI - dimmable DALI

Codes: DPMA4KN370V2

SPMP	4	KN	370	V2	/700ND
Leuchtentyp / Luminaire type					
Farbtemperatur / color temperature	3 = 3000K 4 = 4000K				
Optik / optic					
Gehäusedurchmesser / body diameter			370mm 190mm		
Verbaute LEDs / used LEDs					
Treibertyp / drivertype:					
ND - nicht dimmbar / not dimmable					
DIM - dimmbar 1-10V / dimmable 1-10V					
DALI - dimmbar DALI / dimmable DALI					

	W	lm	lm/W	ø	B	C	kg
DPMA&KN190	14	1400	100	190	41	150	0,9
DPMA&KN370	28	2900	104	370	40	280	2,0

lm - Lumen / luminaire light output

