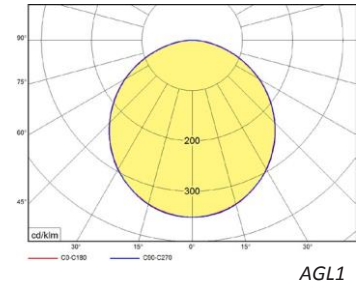
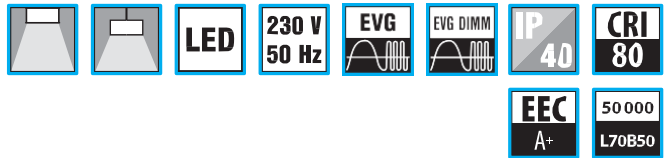


AGL



LED Aufbauleuchten

Gehäuse:

Pulverbeschichtetes Stahlblech in Weiß (RAL 9003)

Optik:

KO - opale Abdeckung
KN - prismatische Abdeckung (optional)

LED:

Mid Power LED
3... warmweiß 3000K
4... neutralweiß 4000K

Verschaltung:

LED Konstantstromtreiber
ND - nicht dimmbar (Standard)
DIM - analog dimmbar 1-10V
DALI - digital dimmbar DALI

Version:

Flache Aufbauleuchte
SS - Quadrat
RM - Rechteck, mittelgroß
RL - Rechteck, groß

LED surface fittings

Body:

White painted (RAL 9003) metal sheet

Optic:

KO - opal cover
KN - prismatic cover (optional)

LED:

Mid Power LED
3... warm white 3000K
4... neutral white 4000K

Wiring:

LED driver (constant current)
ND - not dimmable (standard)
DIM - analogue dimmable 1-10V
DALI - digital dimmable DALI

Versions:

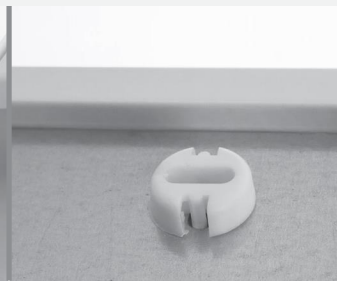
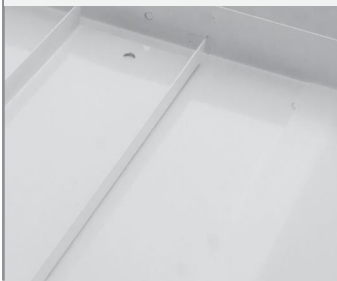
Flat surface fitting
SS - square
RM - rectangle, medium
RL - rectangle, large

VERSTEIFUNG DER ABDECKUNG /
COVER STIFFENER

SICHERHALTERUNG / COVER
SAFETY HOLDER

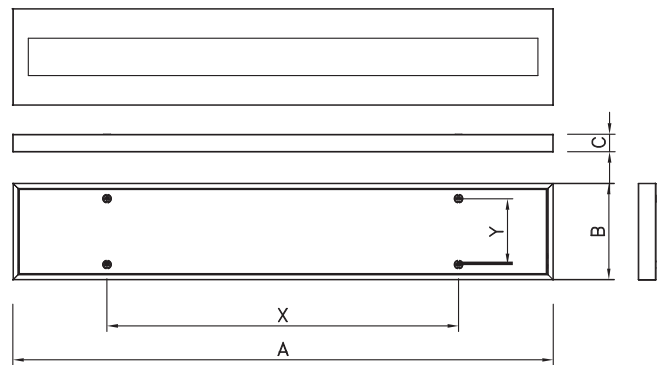
MONTAGELOCH / MOUNTING
HOLE

HALTER ABDECKUNG (MAGNETISCH)
/ MAGNETIC COVER HOLDER



Codes: AGL1RMKO3V1/700ND

| AGL | 1 | R | M | KO | 3 | V1 | / 700ND |
|---|---|---|---|----|---|----|---------|
| Leuchtentyp / luminaire type | | | | | | | |
| Anzahl Leuchtstreifen / no. of light strips | | | | | | | |
| Gehäuseform / Body shape S - Quadrat / square R - Rechteck / rectangle | | | | | | | |
| Gehäuselänge / body length: S = 600mm, M = 1200mm, L = 1500mm | | | | | | | |
| Abdeckung / coverytype: KO - Opal / opal KN - prismatische Abdeckung / prismatic cover | | | | | | | |
| Farbtemperatur / color temperature: 3 = 3000K 4 = 4000K | | | | | | | |
| Verbaute LEDs / used LEDs | | | | | | | |
| Treibertyp / drivertype: 700mA, 1050mA, 1400mA ND - nicht dimmbar / not dimmable DIM - dimmbar 1-10V / dimmable 1-10V DALI - dimmbar DALI / dimmable DALI | | | | | | | |



| | W | lm | lm/W | A | B | C | X | Y | |
|------------------|----|------|------|------|-----|----|-----|------|-----|
| AGL2SSKO&V1/700 | 36 | 3400 | 94 | 650 | 650 | 40 | 470 | 400 | |
| AGL2SSKO&V1/1050 | 56 | 5000 | 89 | | | | | | |
| AGL2SSKN&V1/700 | 36 | 3700 | 103 | | | | | | |
| AGL2SSKN&V1/1050 | 56 | 5400 | 96 | | | | | | |
| AGL1RMKO&V1/700 | 36 | 3400 | 94 | 1230 | 220 | | 40 | 800 | 150 |
| AGL1RMKO&V1/1050 | 56 | 5000 | 89 | | | | | | |
| AGL1RMKN&V1/700 | 36 | 3700 | 103 | | | | | | |
| AGL1RMKN&V1/1050 | 56 | 5400 | 96 | | | | | | |
| AGL1RLKO&V1/1050 | 38 | 3600 | 95 | 1440 | 220 | 40 | | 1100 | 150 |
| AGL1RLKO&V1/1400 | 55 | 5100 | 93 | | | | | | |
| AGL1RLKN&V1/1050 | 38 | 3800 | 100 | | | | | | |
| AGL1RLKN&V1/1400 | 55 | 5400 | 98 | | | | | | |

&-3=3000K,4=4000K

lm - Lumen / luminaire light output